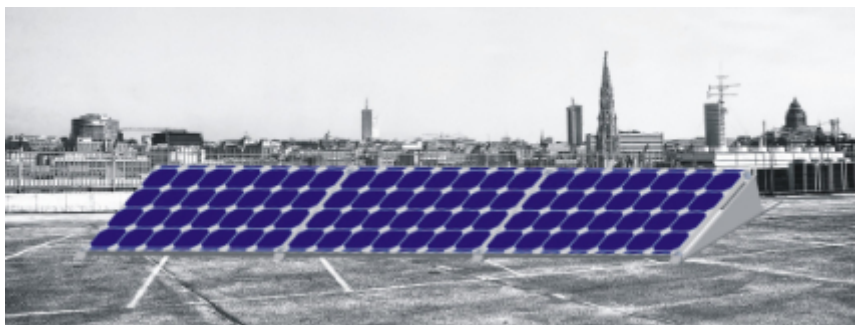


## No penetrating



### System introduction

Flat roof mounting – No penetrating is an universal system for concrete flat roof . This system is designed to be stable and safety complied with the structural mechanics and construction acts. Three plates are designed on three sides to keep out the wind, which could reduce the wind pressure in a large extent. It is widely used for concrete flat roof. Accurate designing and pre-installation eliminates cutting in project place, and make the fastest installation possible. High quality metal material and subsequent process make the mounting system for long time anticorrosive. Static calculation and test will ensure our promise to customers, stable and reliable.

### Technical Data

Installation site: Concrete flat roof  
Tile angle: 15 degree  
Module layout: standard one row in landscape  
Permissible charge:  $1.4\text{KN/m}^2$   
PV modules: framed or unframed  
Module orientation : Landscape or portrait  
Max wind speed: 45m/s  
Material: Alu 6005 T5 & SUS304  
Color: Natural  
Standards: Eurocode 1, DIN 1055, AS/NZS 1170 and other standards  
Warranty: 12 years warranty

### Component List

